



Starplast 

MAXI MODULAR TANK

SEI MX 60.000



technical commercial catalogue 10/2024



SEI MX 60.000

Modular maxi polyethylene tank, transportable in a single truck, for water storage and treatment

LARGE ACCUMULATION

The market is increasingly looking for large systems that can be transported and installed easily, maintaining high characteristics and quality.

MAXI SOLUTION

Starplast has developed a polyethylene tank which, thanks to its design, can be transported in a single truck and has a capacity of 60.000 litres.

APPLICATIONS

The tank can be used for **water storage**, primary, secondary and **complete biological treatment** and **meteoric runoff treatment**.

LARGE ACCUMULATION

Currently, there are storage systems on the market that cannot handle these volumes in a single solution because they have the following problems:



CEMENT

Maximum transportable volume **50.000 litres** and very expensive and difficult transports.

Cement tanks, contrary to those made of PE, in constant contact with the humidity of the underground and with the passing of time, may show signs of degradation such as corrosion of the metal reinforcements contained in the cement or the presence of cracks with consequent water leakage into the surrounding soil.

They also have a high rate of release of certain chemical substances that could dissolve in the water and cause damage to human health.



CARBON STEEL

Horizontal cylindrical tanks are also produced with a volume of **75.000 litres** but have a diameter of 3 metres and therefore those need a special transport.

Steel tank, unlike PE tanks, facilitate the condensation due to the moisture created inside them.



POLYETHYLENE

On the market, there are cylindrical tanks with a diameter of 2.5 metres that can reach a maximum transportable volume of approximately 52.000/**55.000 litres**.

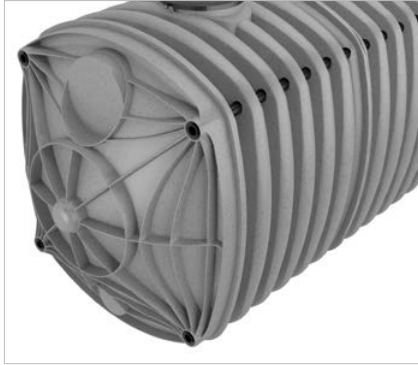
Polyethylene tanks, by nature, are often defined as high-density because they tolerate high water pressures, which is why they are often preferred to steel, also because of generally lower prices. Unlike cement and steel, they have a significantly lower weight, and therefore easier to handle.

Polyethylene is a 100% recyclable material and is therefore also described as environmentally friendly.

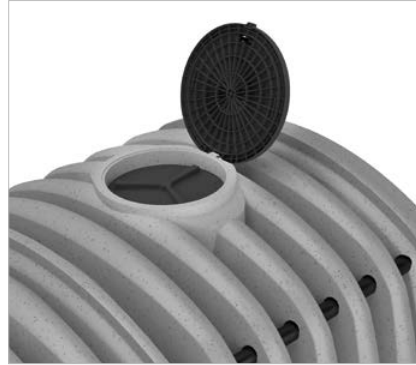


MAXI SOLUTION

Starplast has designed this new tank, SEI MX 60.000, to contain the maximum litre capacity in a single solution and maintain all the characteristics of strength and quality, transportable in a single truck, thus also reducing the cost of transport.



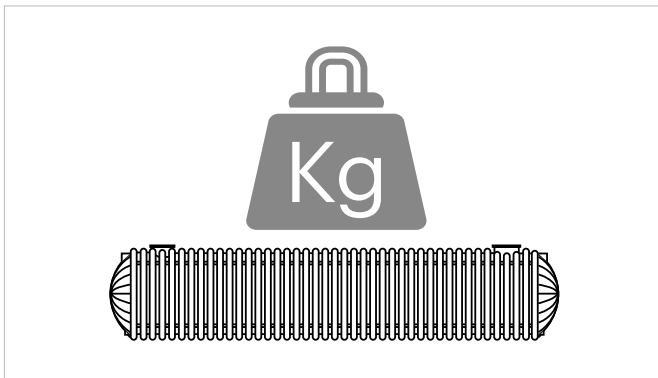
Detail of the front view. Geometry designed for heavy soil loads.



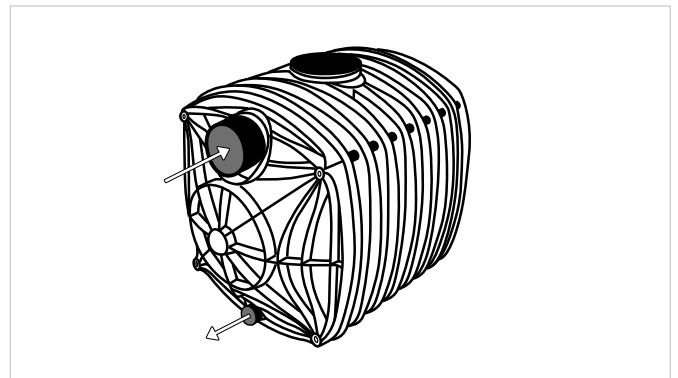
Detail of new injection cap.

This particular parallelepiped shape with rounded corners fills almost the entire transport volume of an articulated truck, reaching a volume of 60,000 litres while maintaining the characteristics of mechanical resistance and hydraulic seal also above all through a special welding system between the modules that is now the subject of a brevet.

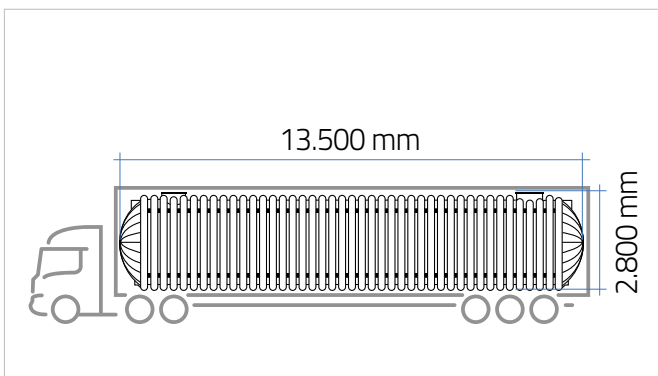
ONE TANK, MULTIPLE BENEFITS



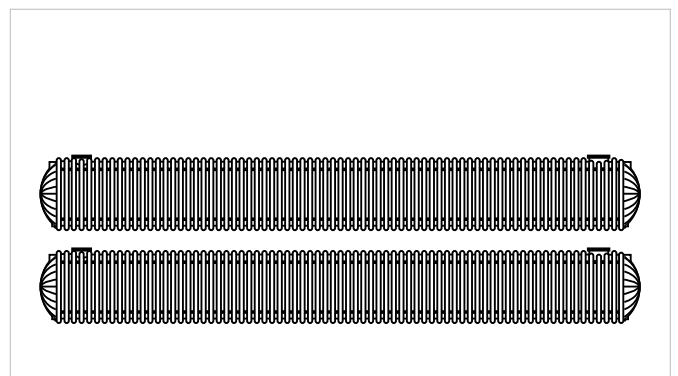
Geometry engineering with 'corner' reinforcements for increase the mechanical seal.



Possibility of connections (inlet/outlet) even with diameters of large pipe diameters (max. Ø 630).



Single tank model SEI MX 60,000 useful capacity 62,000 transportable by single truck



Possibility of higher volume, on request, with on-site sealing.

APPLICATION

The tank is normally used for the storage of any liquid of density close to 1 kg/dmc compatible with polyethylene including storage and the recovery of rainwater or even the storage of drinking water. The same tanks can be used as real treatment system for:

WATER RECOVERY

- water reserve, also for drinking water
- fire extinguishing system with *pressurisation system with vertical pumps inside*
- lamination to ensure the *hydraulic and hydrological invariance of a particular area requiring such an application*
- *accumulation and continuous* rainwater systems

BIOLOGICAL TREATMENT

- primary
- secondary
- complete

METEORIC TREATMENT

- runoff with *treatment of* stormwater

Examples of tank applications:

COALESCENCE DEOILER DEC MX 60,000 AS - NS 200

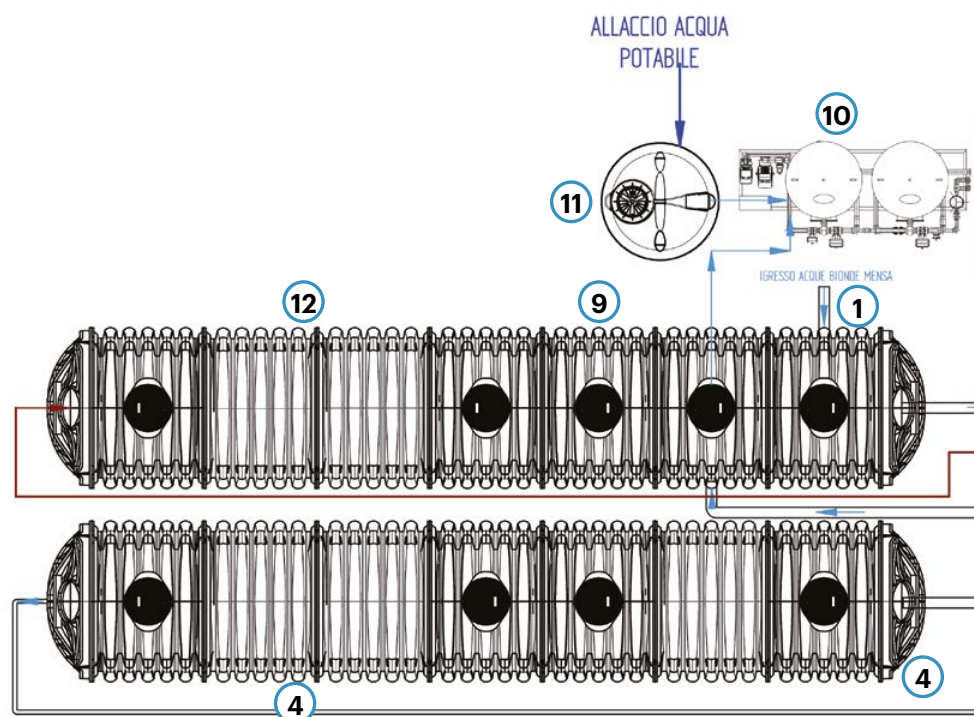
- 1 Inlet pipe
- 2 Desanding
- 3 Deoiling
- 4 Outlet



SEWAGE DOMESTIC SEWAGE CAPACITY 600 P.E.

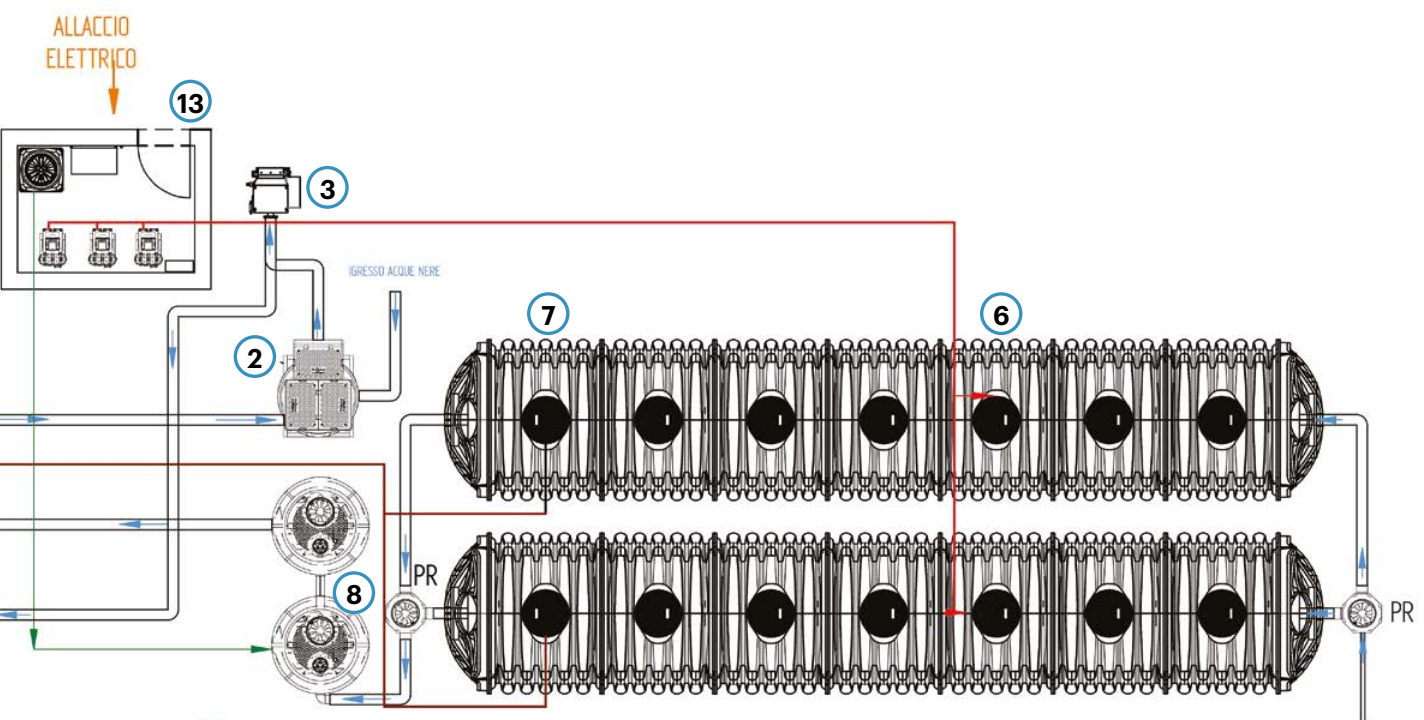
PLANIMETRIC SCHEME

- 1 Degreaser
- 2 Lifting Station
- 3 Automatic screening (rotogravure)
- 4 Primary sedimentation
- 5 Equalisation / pre-denitrification
- 6 Oxidation
- 7 Secondary Sedimentation / Sludge recirculation
- 8 Disinfection
- 9 Filter Relaunch Tank
- 10 Filtration skid
- 11 Fiscal sump
- 12 Backwash water storage tank
- 13 Sludge thickening tank
- 14 Technical equipment room




ACTIVATED SLUDGE PURIFIER DFA MX 53,000 T3

- 1 Inlet pipe
- 2 Side channel blower
- 3 Flap cap Ø620
- 4 Bayonet cap Ø50
- 5 Outlet pipe
- 6 Sludge recirculation pump
- 7 Air diffusers



Starplast

 +39 0722 079201

 info@starplastsrl.it
www.starplastsrl.it

   **Starplast srl**

 Via dell'Artigianato, 43 / 61028
Sassocorvaro Auditore (PU)

